

MultiHead OT.M.P. IV - Special cutting tool head for the gasket industry

The MultiHead is the developed tool head from ARISTO for the gasket industry for cutting flat gasket materials. For this purpose it has one powerful high-frequency oscillating tool axis.

An integrated laser pointer guarantees the precise positioning of the origin and can be used as a verification device (Pathtrac).

The standard marking device is suitable for different pens to mark the individual products. Optionally available is a second marking device.

All tools are computer-controlled. This enables aligning, cutting, creasing and marking without changing the tools, which increases the throughput and therefore also the profitability of this tool head.

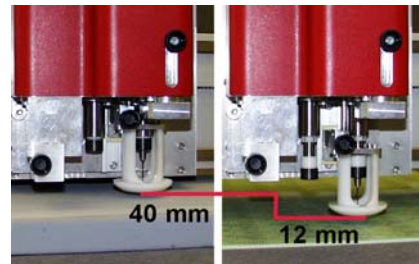
AutomaticEye System

The intelligent camera system, integrated in the tool head for identification of fiducial on prints, allows quick and accurate cutting results of printed materials, even with misalignment and distortion.

Motorized stroke adjustment

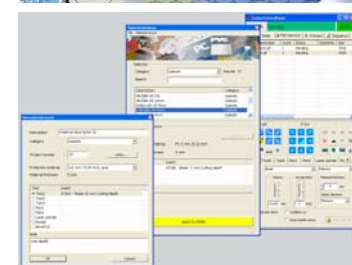
A powered stroke adjustment increases the maximal material thickness which can be processed to approx. 35 mm.

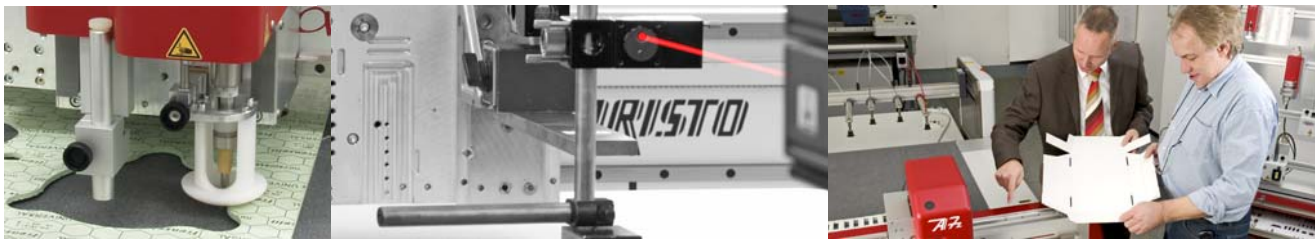
The tool stroke is infinitely variable between 12 mm - 40 mm. This way the stroke can always be optimally adjusted to suit the material thickness. This considerably reduces the waiting times, particularly when processing thin materials.



Process database

The efficiency is additionally increased by the access to the ARISTO database *CutRecall*. The setup for an already stored process is only a click away; the storing is carried out dialogue-controlled after the process run. The setting up of new processes is shortened due to the database.





Specifications *MultiHead OT.M.P. IV*

Required compressed air	6 bar (87 PSI) regulated, pulse-free, water and oil-free
Up to 5 Tools	
Tool 1	Electrically oscillating for blades, tangentially controlled, lifting and lowering pneumatically, pressure 180 N oscillating lift 2 mm cutting depth up to 20 mm, with the motorized stroke adjustment up to 35 mm noise level approx. 73,5 dB(A)
Tool 2¹⁾	Marking device for pens (ball point refill, fibre tipped pen)
Tool 3¹⁾	2 nd marking device for pens (the same as tool 2)
Tool 4	Integrated laser pointer as origin pointer, fitting-in assistant and for the simulation mode
Tool 5¹⁾	Integrated color camera for <i>AutomaticEye</i> system for indication of fiducials on printed materials
System requirements	ARISTOMAT of the series CL, GL, SL or TL

1) Option

2) Only in combination with an ARISTOMAT GL and TL

3) Only in combination with an ARISTOMAT GL, SL and TL

Options

- ✓ Motorized stroke adjustment³⁾
- ✓ Up to 2 marking devices
- ✓ Camera system *AutomaticEye*³⁾
- ✓ Data base ARISTO *CutRecall*²⁾

Choice of material

Soft material gaskets

- ✓ fibrous materials
- ✓ graphite-based materials
- ✓ PTFE materials
- ✓ gasket paper

Elastic gaskets

- ✓ rubber materials
- ✓ rubber cork materials
- ✓ felt materials
- ✓ foam materials

Metal-reinforced gasket

- ✓ graphite-based materials with tanged- or expanded metal insert and others

