

*What's your idea? We're cutting it*

**AIRISTO<sup>®</sup>**  
Cutting Solutions





## Precision since 1862

### *Precision as tradition*

ARISTO® was founded in 1862 as a factory for mathematical and surveying instruments. Since then quality, precision and reliability have always played roles for us. It was not long before the company made a worldwide name for itself as a supplier of precise slide rules and drawing aids. Today we are considered to be the leading German manufacturer for large format, computercontrolled flatbed cutting machines named ARISTOMAT®.

### *Precision engineering is our passion*

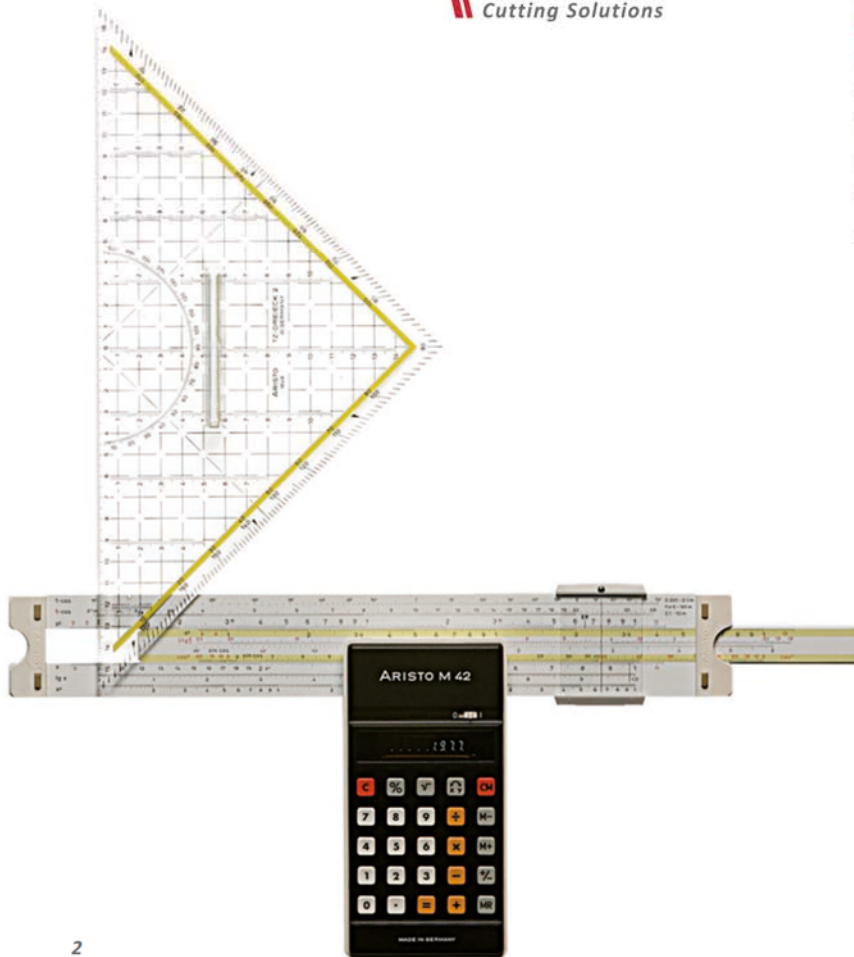
For over 150 years, all of our knowledge and expertise has been flowing into the manufacture of precision engineered masterpieces. This can be seen by our ARISTOMAT® cutters and their cutting results.

### *No task is too difficult for us*

Whatever you want to cut, crease, score, die cut or mill, we will find the best solution for your material.

- ✓ Precision since 1862
- ✓ Leading German manufacturer for large format, computer-controlled ARISTOMAT® flatbed cutters
- ✓ Award-winning, innovative products
- ✓ For every problem we always have an optimal solution

**155 YEARS**  
TRADITIONALLY  
INNOVATIVE





## 'Made in Germany' stands for highest performance

### *Hamburg innovations for the world*

Good tools must be continually customised to meet new requirements. Therefore, at ARISTO® we invest strongly in our own research and development.

Thanks to our know-how and applications engineering, we solve your cutting requests. International patents and awards document our achievements in the innovation sector.

### *Quality at the highest level*

Customers worldwide appreciate the reliability of our ARISTOMAT® cutting systems.

Precision engineering without pronounced quality thinking is not possible; we do not just rely on our quality seal 'Made in Germany'. The spirit of total quality management is alive throughout our whole team. Only in this way are we able to deliver remarkable performance and can guarantee the high ARISTO® quality permanently.

### *Our service: first class worldwide*

Just as important as first-class products, is an uninterrupted service for our customers located around the globe. Therefore we have a national and international service network. Optimally trained technicians from certified service partners are on standby.

Additionally, our remote service desk provides you with quick and effective support.

- ✓ Own research and development ensures our pioneering role in applications engineering
- ✓ Quality Management, based on ISO 9001 for high process reliability
- ✓ Global service through a network of certified partners ensures satisfied customers around the globe



**ARISTO** ARISTO® production

**AI** ARISTO® sales and services





## Just a better cut

### Versatile tools

Several parallel-working, multi-functional tools provide you real efficiency: alongside a variety of cutting tools, we offer in-house development, our intelligent camera system AutomaticEye, various levels of automation and further special process options.

### Perfect process integration

ARISTOMAT® cutters integrate themselves smoothly into automated and synchronised production processes. Workflow with all well-known RIP-manufacturers is guaranteed. ARISTOMAT® cutters can be remote-controlled and supply all signals required for process control.

### Individual solutions

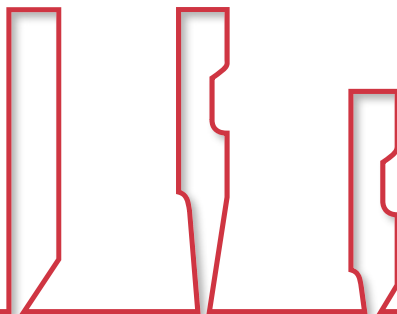
We spend sufficient time analysing the most diverse application areas. Our job is only complete when we have found the best technological and commercial solution for you.

### Custom cutter

Thanks to our modular system, we can customise an ARISTOMAT® cutter to fit your process exactly: for challenging materials, difficult workflows or even tight budgets.

- ✓ High customer affinity due to intensive analysis of the customer's situation
- ✓ Modular technologies for individual ARISTOMAT® systems
- ✓ Innovative tool range for branch-specific requirements
- ✓ Individual adaptation to every workflow





## A room full of ideas: ARISTO® process centre

### *This is where the future takes shape*

The heart of our company is the process centre. Here our technicians are continually developing innovative solutions. Whereby it is foremost not only about techniques, but above all about securing an important competitive edge for you on the always faster moving markets.



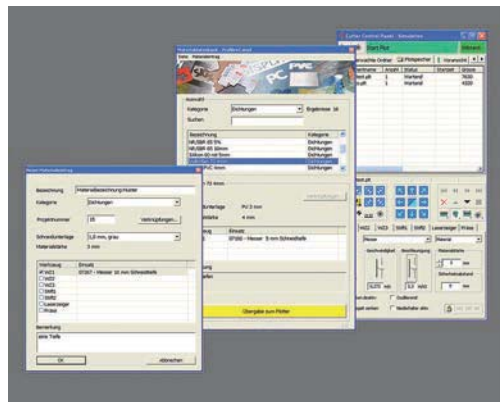
### *Understanding what customers need*

The more closely we work together with you, the more precisely we can solve your processes. This is why we invite you to our process centre, for testing and project-specifically refining the newest developments together with our specialists. In doing so, we can customise our machines directly according to your manufacturing systems. One of these ARISTO® developments is aimed at large format printers – our new ARISTOMAT® LFC™ Series cutter systems are able to cut formats larger than 5 m wide and 7 m long. That's real Large Format Cutting!

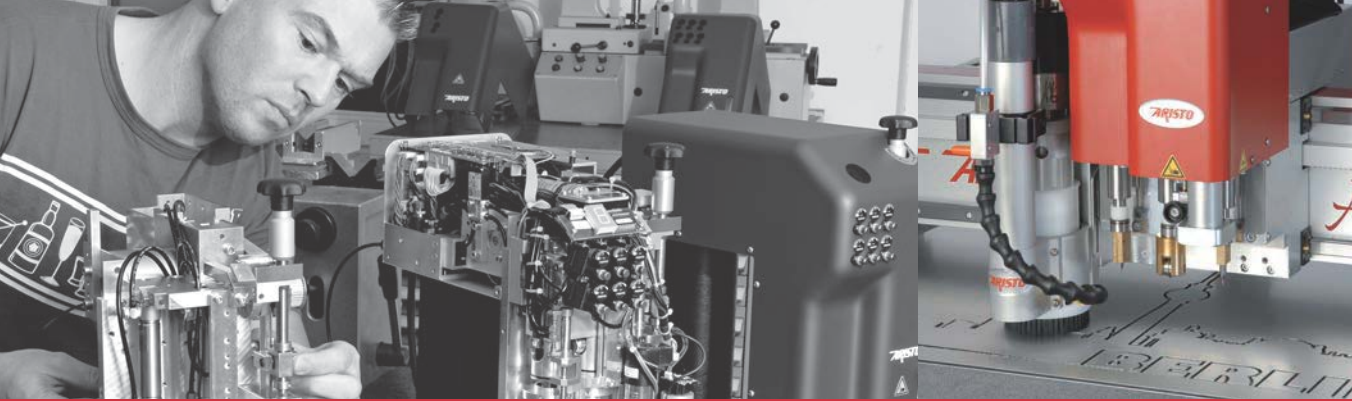
### *Solutions for every branch*

Of course you are specialist in your branch. Our process centre offers you optimal conditions in which to intensively grapple with all performance requirements and to develop new solutions, which are just as practical as they are economical.

- ✓ Own research and development for a technical head start
- ✓ Direct customer development participation for optimised ARISTOMAT® systems
- ✓ Custom-made products for every branch







## Here the leading minds are at work

### **Cutting machines for all cases**

ARISTOMAT® cutters integrate into every workflow thanks to a large variety of tool heads and production modules. Set-up times are reduced using several parallel tool stations.

### **MultiHead for higher productivity**

The ARISTO® MultiHead series tool heads change their integrated tools fully automatically. They can be combined with further tool modules and can so process the most varying materials.

### **Cutting performance at the highest level**

The ARISTOMAT® performance and tool modules are excellently suitable for even the hardest materials. Where others are already having to mill, our mechanical oscillators are still cutting away without any problems.

### **All under remote control**

With the intuitive operable ARISTO® CutterControl-Panel-Software (CCP), which is available in many languages, the ARISTOMAT® cutters are controlled by PC. Our interactive database ARISTO® CutRecall stores all process parameters.

### **Ergonomics on all sides**

Each ARISTOMAT® is easy to operate and ergonomically designed: the remote control ensures an optimal handling of the machine. The machine's optimal feed height means it is easy to load the material. Access from all sides enables a loading and unloading of oversized and bulky materials.

### **Application without doubts**

The ARISTO® application technology assists you at all times – product quality and economic efficiency are lastingly correct.

- ✓ ARISTOMAT® cutting machines for all requirements
- ✓ Multifunctional tools, strong in cutting for more throughput
- ✓ Most modern operator software for greater efficiency
- ✓ Ergonomic construction for quicker processes
- ✓ Application technology and process database for lasting success





## *Manufacturing depth is the best quality guarantee*

### **Well built**

In order for ARISTOMAT® cutters to be durable and light, we construct them as a vibration-reducing sandwich structure, also used in the aircraft industry. For this we connect layers of aluminium to a honey-comb core. This lightweight construction also reduces your operational costs: less moved mass results in lower power consumption.

### **Highest stability in a confined space**

For a compact, stable and light construction, we use the advantages of a ribbed structure. Overhang on the sides is slight due to an optimal vertically orientated structure. The traverse bridge drives ensure dynamics and add component stiffness. The powerful vacuum technology guarantees process security.

### **Own manufacture**

All ARISTOMAT® cutters are manufactured in our Hamburg factory. As a result we have direct access to the quality and performance of all components and keep our know-how within the premises. This way we secure the long-term availability and possibility for repairs.

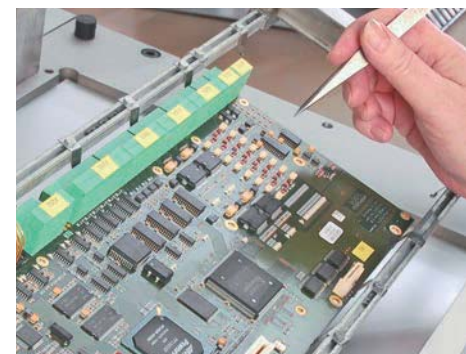
### **Extensive manufacturing depth**

All important components of ARISTOMAT® cutters are also manufactured by ourselves in Hamburg. The ISO 9001 is the basis for our Quality Management System.

### **Certified suppliers**

We choose our suppliers according to strict criteria. They are rated by us based on ISO 9001 and most have their manufacturing centres located in and around Hamburg. This ensures first-class quality and quick deliveries.

- ✓ Stable and durable construction for daily use
- ✓ Compact construction for every production setting
- ✓ Own production for consistent quality assurance
- ✓ First-class suppliers for production security





## A cut above the rest

### **The ARISTOMAT® system options**

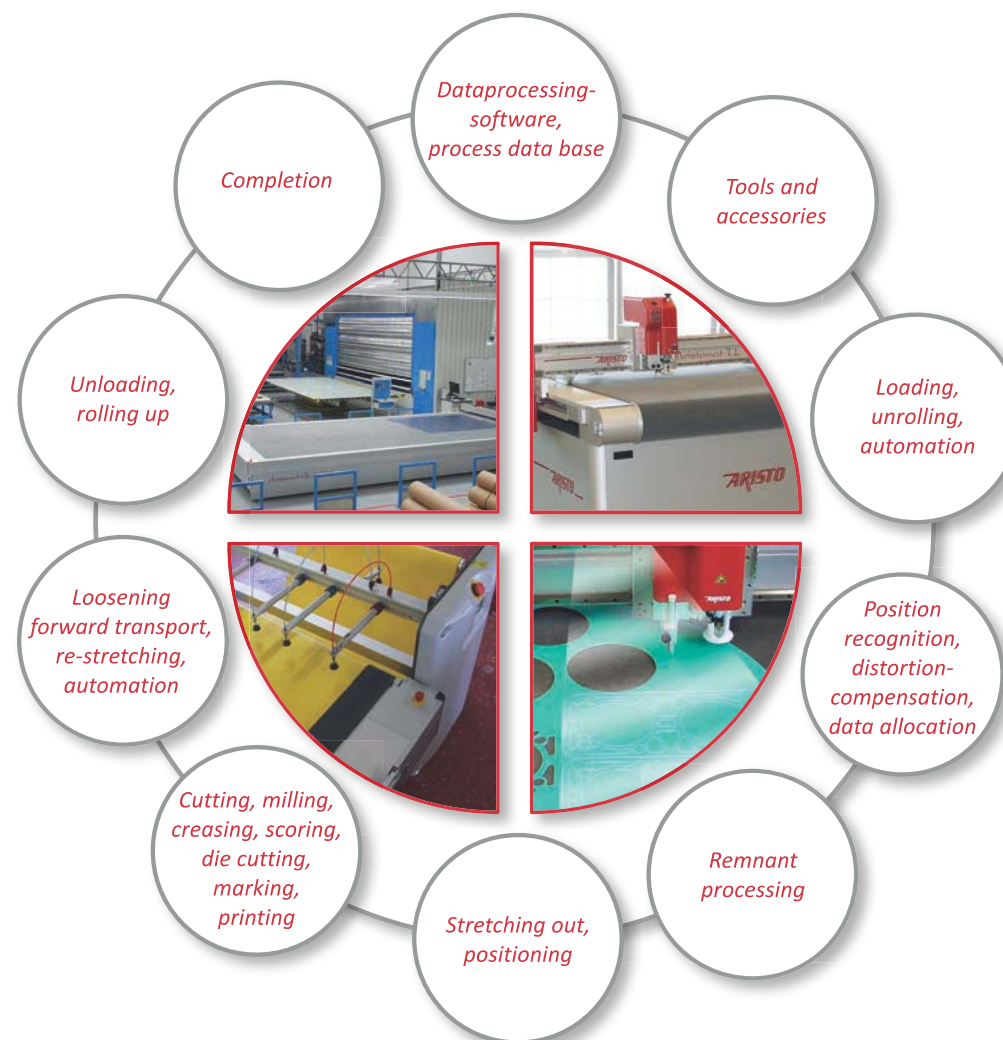
Your process determines the selection of the optimal ARISTO® system modules. Focus is on the efficiency of the equipment. Benefit from our expertise!

### **Workflow advice**

Starting with the data transfer, ARISTO® offers a wide range of system options for the individual process steps. We work together with our sales partners to design the perfect system configuration for you.

### **Tool heads**

The large choice of tool heads ensures your technical and economical success in the process of product realisation. This together with the suitable ARISTOMAT® dimensions for your task ensures the sustainability of your investment.







## Purely a head affair

### Tool heads



Oscillating cutting, creasing, V-cutting, routing, wheel cutting, labelling, marking, punching ...

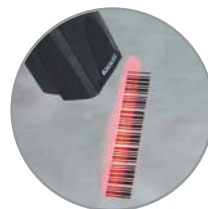
### Options to optimise



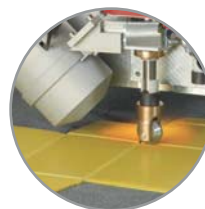
Automatic material alignment



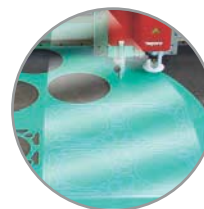
Database for process parameters



Automatic process identification

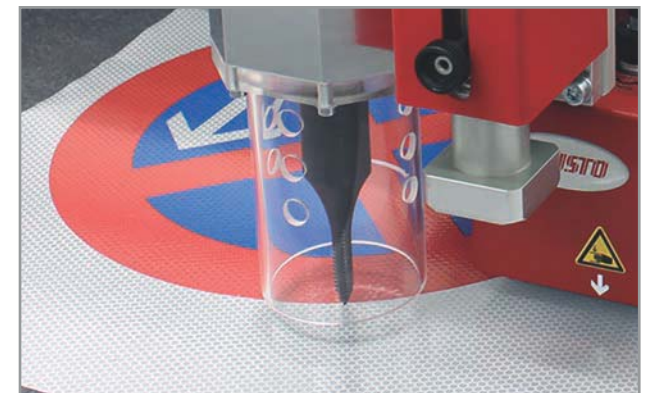


Creasing of PP material



Projection of cutting contours

### Cleverly combined!



## Material world: packaging

### *Packaging rethought*

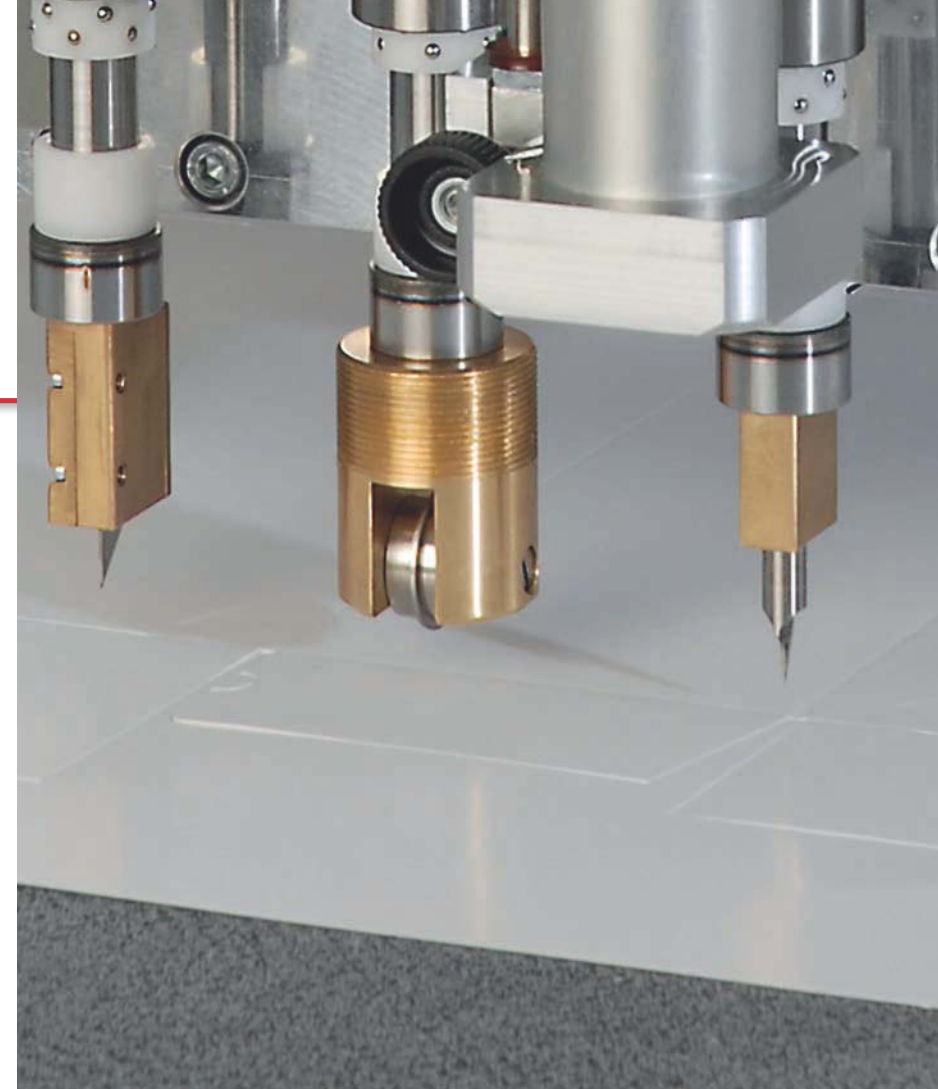
ARISTOMAT® cutters unfold their full flexibility when it comes to simply, quickly and economically manufacturing packaging – from sampling to serial production. In close cooperation with you, we develop innovative solutions for new challenges of the packaging industry.



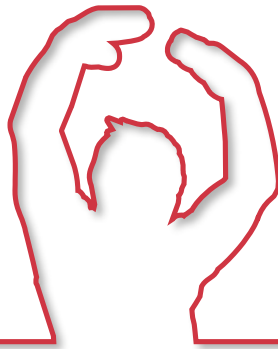
### *Packaging materials well handled*

Whether corrugated cardboard or solid board, ARISTOMAT® cutters effortlessly and precisely process all types of cardboard packaging material.

- ✓ Flexible cutting machines for all packaging
- ✓ Powerful and intelligent ARISTOMAT® cutters for challenging materials
- ✓ Highest precision for the best repeatability







## Material world: graphics and finishing

### Foils flexibly processed

ARISTO® was one of the first manufacturers of flatbed cutters for cutting signmaking foils. We offer particularly versatile and flexible solutions for signage and printing industry.

### Design value added

Cutting of digital prints or silkscreen prints exactly on contour – no problem with an ARISTOMAT®. Our innovative high-performance tools can effortlessly cope with even laminates, the most sensitive foils or special materials.

- ✓ Individual solutions for all task fields
- ✓ Exact cutting even of the most sensitive foils and geometries



**CALDERA**  
WIDE FORMAT IMAGING

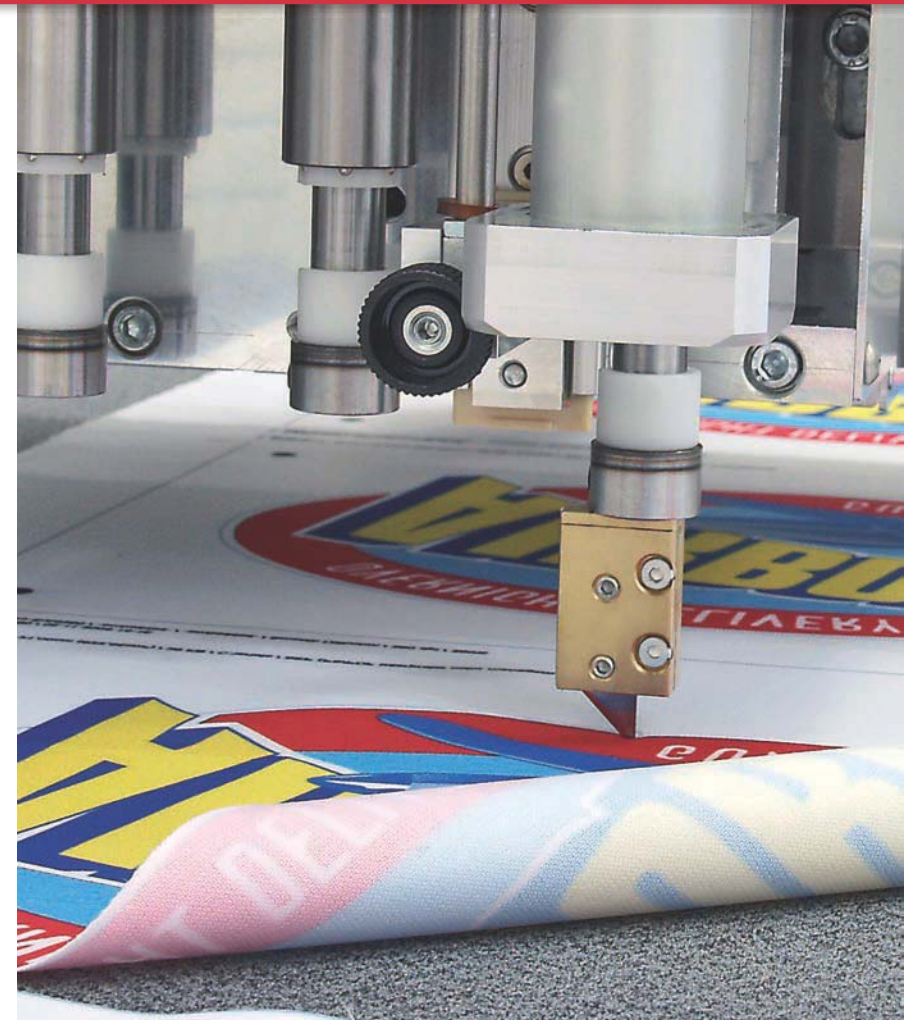
**ColorGATE**  
SOLUTIONS FOR PRODUCTION

**EASYSIGN**

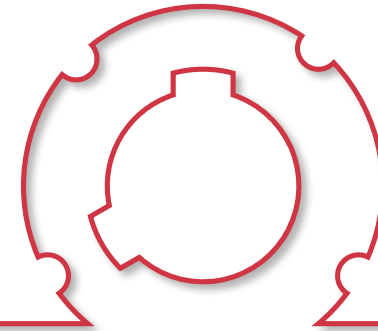
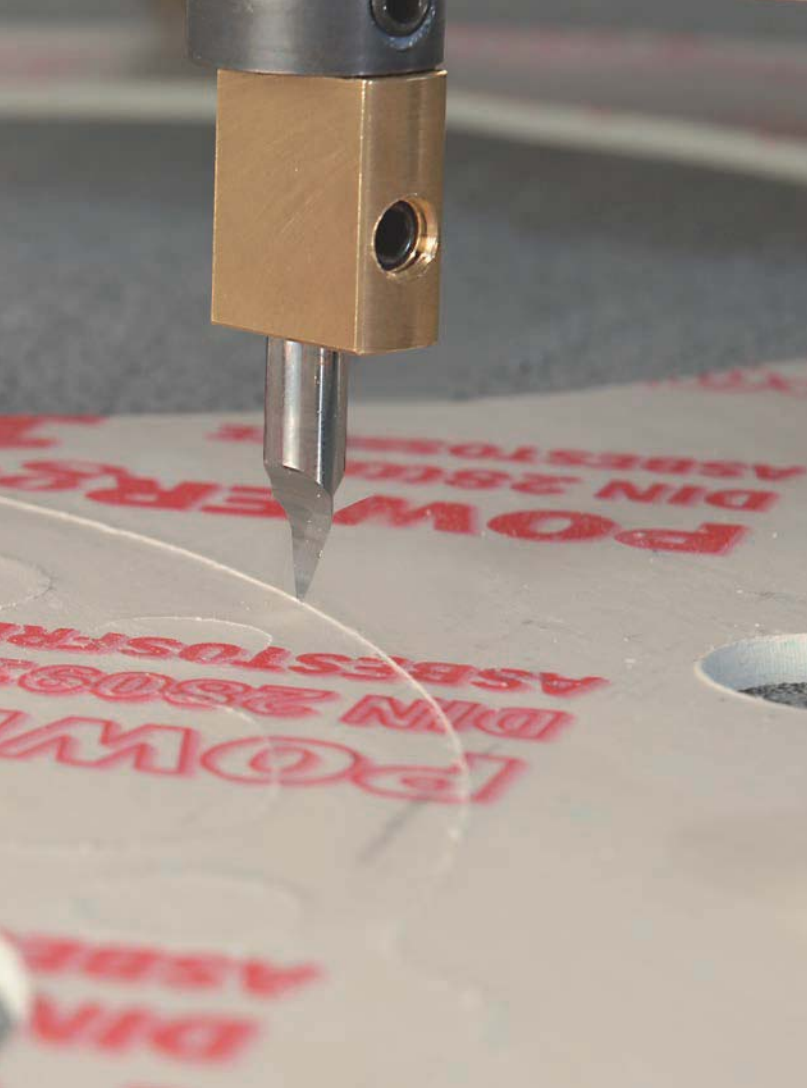
**ONYX**  
Software for Superior Printing Workflows

**SAI**

**WASATCH**  
COMPUTER TECHNOLOGY







## Material world: gaskets

### *Gaskets professionally cut*

ARISTOMAT® cutters offer efficient and economical solutions for gasket production. With the for this purpose specially developed ARISTO® Multi-Head OT.M.P. and A5z you can powerfully and precisely cut the greatest variety of materials.

### *Gasket material optimally utilised*

Very expensive materials are used in the production of gaskets. The optimal utilisation of the remnants is an important contribution towards cost efficiency. The ARISTO® ProjectionBeamer system enables a best possible material utilisation.

- ✓ ARISTO® MultiHead technology for high performance and cost efficiency
- ✓ Highest cutting quality of tough materials
- ✓ Innovative ARISTOMAT® ProjectionBeamer technique for optimal material utilisation



## Open for new material worlds

### Cutter for rotors

Carbon fibre is increasingly being used for heavily stressed parts. So rotor heads and blades, for example, are subjected to forces that greatly strain traditional materials.

The processing of carbon fibre, however, requires technologies which meet the highest demands. For these tasks, ARISTO® offers optimal solutions.

### New materials

An increasing amount of high-strength components are replacing the traditional materials in many industrial fields. Their rational and efficient processing demands innovative and flexible technologies. Together with leading manufacturers, ARISTO® develops new cutting technologies for the products of tomorrow.

- ✓ ARISTOMAT® cutters for high-tech operation
- ✓ Extreme reliability for high-precision results
- ✓ Innovative process technologies for the future
- ✓ UltrasonicCuttingDevice UCD35k – for cutting reflective vinyl

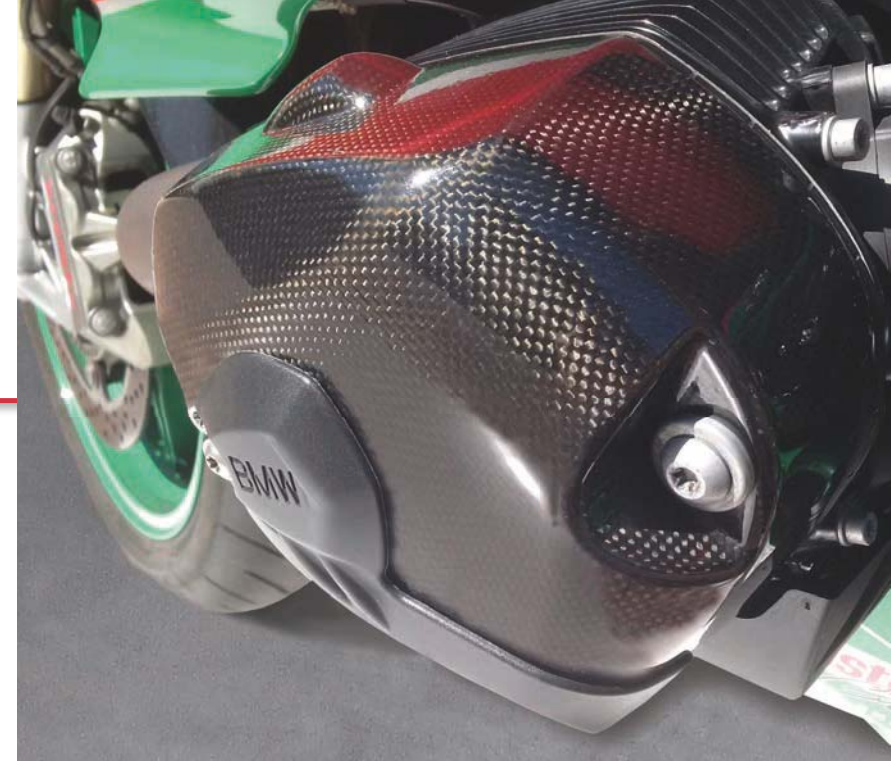
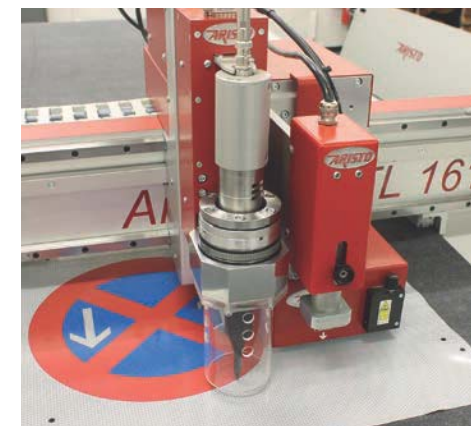


Photo: eurocopter





## ARISTOMAT® dimensions

### Formats:

The graphic shows the current ARISTOMAT® machines. Further formats are available on request.

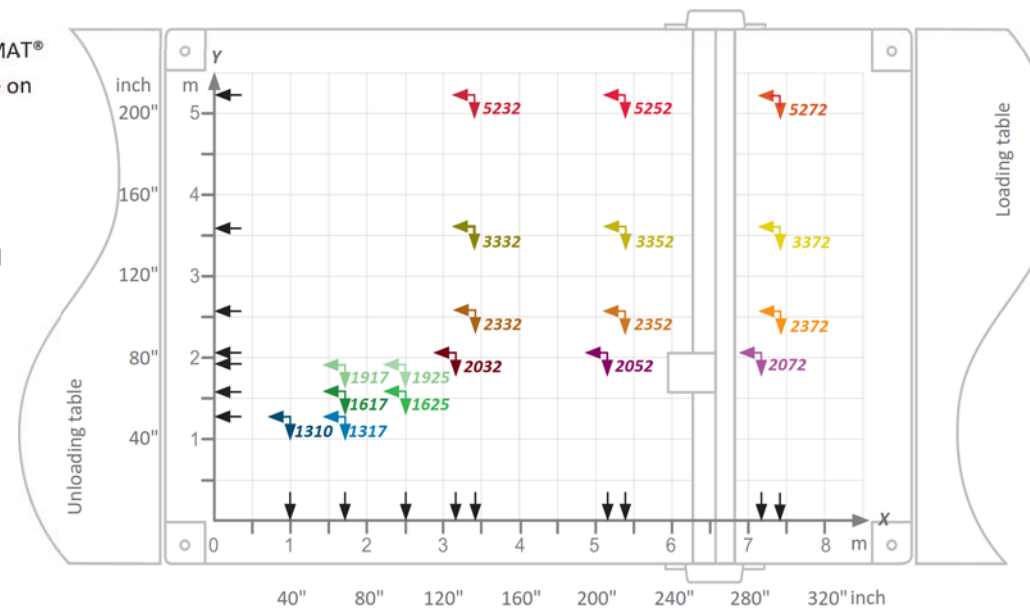
### Actual working surface:

The utilisable working surface depends on the machine equipment and the tool system assembly.

### Machine equipment:

ARISTO® offers a variety of machine equipment depending on the process:

- ✓ Conveyor
- ✓ Unloading table
- ✓ Loading table
- ✓ Automation for material feed and removal



### ARISTOMAT® travel distances:

Axis	Y	X	Y	X
Model	mm	mm	inch	inch
1310	1.300	1.000	51"	39"
1317	1.300	1.700	51"	67"
1617	1.600	1.700	63"	67"
1625	1.600	2.500	63"	98"
1917	1.900	1.700	75"	67"
1925	1.900	2.500	75"	98"
2032	2.040	3.200	80"	126"
2052	2.040	5.180	80"	204"
2072	2.040	7.160	80"	282"
2332	2.575	3.440	101"	135"
2352	2.575	5.420	101"	213"
2372	2.575	7.400	101"	290"
3332	3.615	3.440	142"	135"
3352	3.615	5.420	142"	213"
3372	3.615	7.400	142"	290"
5232	5.345	3.440	210"	135"
5252	5.345	5.420	210"	135"
5272	5.345	7.400	210"	290"







## Our customers are our partners

### **Quick installation**

Modular construction ensures quick installation on site.

### **After sales service**

The worldwide network of service partners with their spare parts storage ensures a smooth and reliable delivery, which also ensures exceptional machine availability.

### **Customer proximity all over the world**

Sales and service locations provide an optimal support: we are locally staffed to provide assistance and advice on all continents and in 19 European countries.

### **Training for customers**

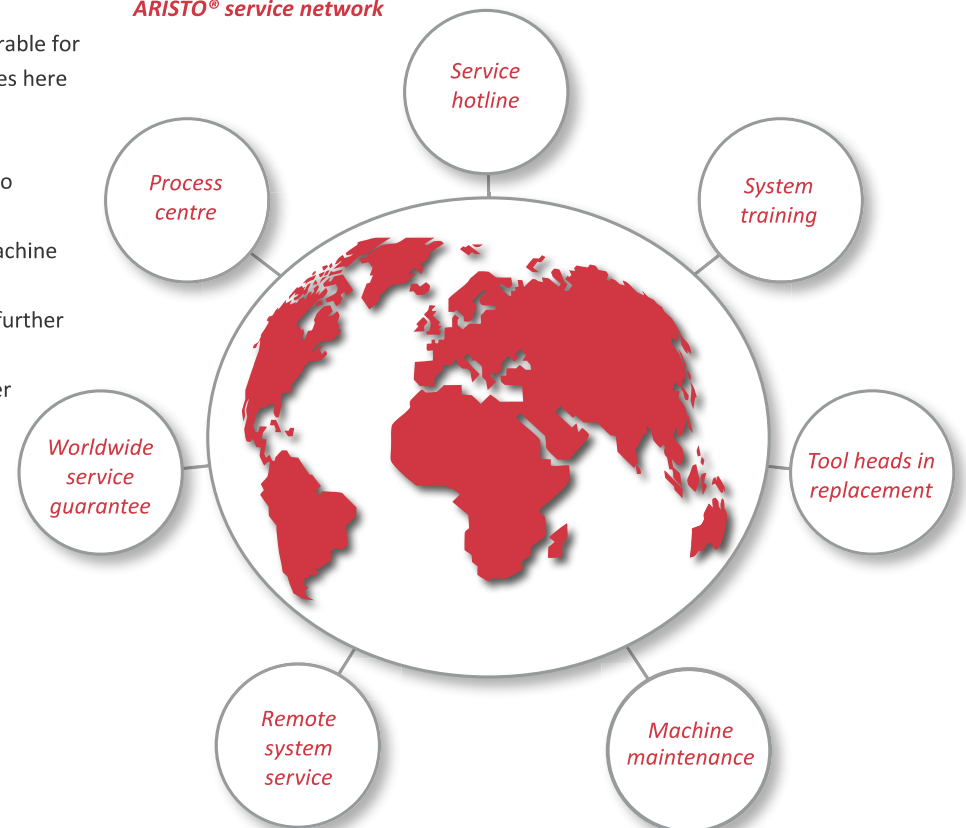
We do not only keep our staff up to the latest state of the art, but also our customers. Due to preventive maintenance disruption can be extensively avoided. On the other hand, our development department uses the service hotline to gain new impulses.

### **Safety and comfort**

Safety and operational comfort are inseparable for us. That is why the most modern techniques here ensure safe working processes.

- ✓ Rapid installation for a quick putting into operation
- ✓ Extensive customer support for high machine availability
- ✓ Intensive knowledge transfer for rapid further development of our products
- ✓ Bases worldwide for individual customer advice
- ✓ Most modern systems for high operating safety

### **ARISTO® service network**



# cut by

## References:

