

MultiHead IV - 7 PRO - Multifunctional tool head with 3 tool axis

The MultiHead IV - 7 PRO is the result of the consistent further development of our entry-level model of the MultiHead series made by ARISTO®.

- Up to seven tools
- Process database (option)
- AutomaticEye Intelligence (option)
- Integrated laser pointer

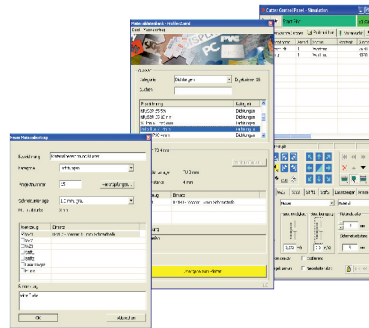
Up to seven ready-set-up tools and software-controlled pressure force for each single tool position allows to operate a workflow without further interventions or set-ups to complete various processes.

All tools are automatically selected and computer controlled. There are several steps enabled without any tool change. The productivity and thus profitability of this tool head is outstanding.

Process database

By accessing the ARISTO® database *CutRecall* (option) adds additional workflow performance. The setup of an already saved process is just one click - easy as the saving process which is dialog-driven after a finished work process.

Setting up new processes are shortened by the database and the lean workflow structure of the ARISTO® Cutters.



AutomaticEye

For detecting fiducials or reading of QR-codes the MultiHead can be upgraded with ARISTO's camera system AutomaticEye. This increases the level of automation and performance.



Specifications MultiHead IV - 7 PRO

Required compressed air	8 bar (116 PSI) regulated, pulse-free, water and oil-free
Cutting depth	Up to 24 mm
Up to 7 Tools	
Tool 1	Electro-mechanical oscillating for blades, tangentially controlled, lifting and lowering pneumatically, Oscillating lift 2 mm pressure 250 N, down holder up to 35 N, noise level approx. 73,5 dB(A)
Tool 2	Fixed; for blades, punching blades, hole puncher or creasing wheels, tangentially controlled, lifting and lowering pneumatically, pressure adjustable depending on direction up to 190 N
Tool 3	The same as tool 2, but pressure up to 120 N
Tool 4¹	Marking device for pens (ball point refill, fibre tipped pen)
Tool 5¹	2nd marking device for pens (the same as tool 4)
Tool 6	Integrated laser pointer as origin pointer, fitting-in assistant and for the simulation mode
Tool 7¹	Integrated color camera for AutomaticEye system for identification of fiducial on printed materials
System requirements	ARISTO® GL, TL, LFC or XLR

1. Option

Options

- ✓ AutomaticEye System¹
- ✓ Process database CutRecall¹
- ✓ Up to 2 marking devices

Choice of material

- ✓ cardboard
- ✓ corrugated cardboard up to 24 mm
- ✓ cartons
- ✓ laminates
- ✓ PUR-foam
- ✓ printing blankets
- ✓ coating plates
- ✓ preprinted vinyl films, reflective sheetings
- ✓ textile and technical fabrics
- ✓ soft, elastic and metal-reinforced gasket materials and others